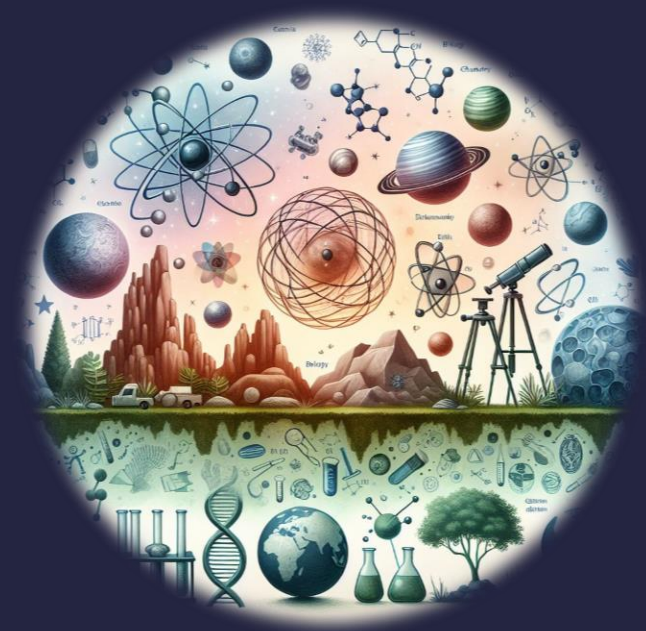


Science Standards Assessment

Kenwood K-8 Center



Branches of Science



- *There are four branches of questions students will see on the test.*
- **1. Nature of science**
 - Students performing at the mastery level of this reporting category will be able to identify the test and outcome variables, differentiate experiments and investigations, analyze information to make inferences or predictions, differentiate replication and repetition, and distinguish between theories and laws.
- **2. Earth and space science**
 - Students performing at the mastery level of this reporting category will be able to relate the positions of the Sun, Moon, and Earth that result in tides, moon phases, and eclipses. Students will be able to identify how Earth changes due to weathering, erosion, and plate tectonics. Students will be able to recognize that the Sun's energy influences global atmospheric patterns.

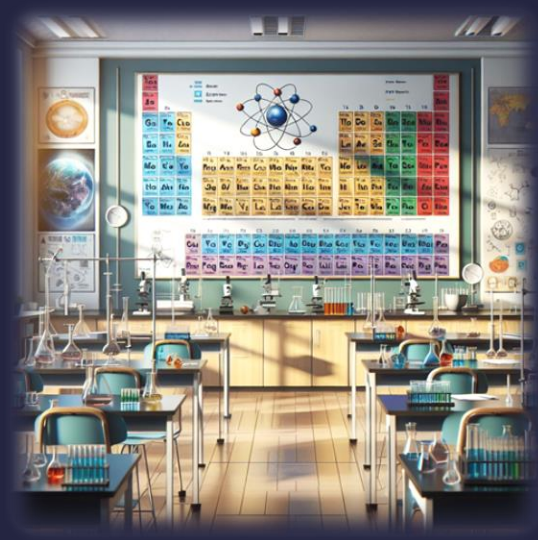
Branches of Science Continued

- **3. Physical science**

- Students performing at the mastery level of this reporting category will be able to classify substances by physical properties, differentiate physical and chemical change, distinguish between kinetic and potential energy, and differentiate contact forces and forces acting at a distance.

- **4. Life science**

- Students performing at the mastery level of this reporting category will be able to identify the functions of the human body systems, classify organisms, identify ways genetic variation contributes to the scientific theory of evolution, determine probabilities for genotypic and phenotypic combinations, and distinguish relationships among organisms in a food web.





Facts about the SSA test

- It was last administered while students were in 5th grade
- It covers material learned in 6, 7, and 8th grades
- It will be a computer-adaptive test
- Students will receive a score from 1 to 5

What is a Computer-Adaptive Test (CAT)?

- CATs are administered online. In a CAT, each test question is selected by a computer algorithm that meets the published test blueprint addressing the content standards and is based on the student's performance on previously administered items. A CAT is tailored to the student's ability based on whether the student responded successfully to the preceding item or sets of items. Each time a student answers a question, his or her response helps determine the next question or set of questions that will be presented to the student. It is written at student's grade level.



What is the benefit of a CAT?



- The test attempt is tailored to the ability level of a student, so the precision of resulting test scores is increased, across all ability levels.
- The tests are more precise because the test is adapting dynamically to the students' ability level, so fewer items can be delivered to students than a fixed-form test.
- The tests are more secure since students encounter different items throughout the test.
- Results are delivered within 24 hours after the student takes the test.

Sample question:

- Benchmark SC.8.P.9.2 Differentiate between physical changes and chemical changes.
- When a candle is lit, the wick burns, the wax melts, the candle changes shape and the air around the candle heats up. Which of the following is an example of a chemical change?
- A. the wick burning
- B. the wax melting
- C. the candle changing shape
- D. the air around the candle heating up



Test dates and how to see your results:

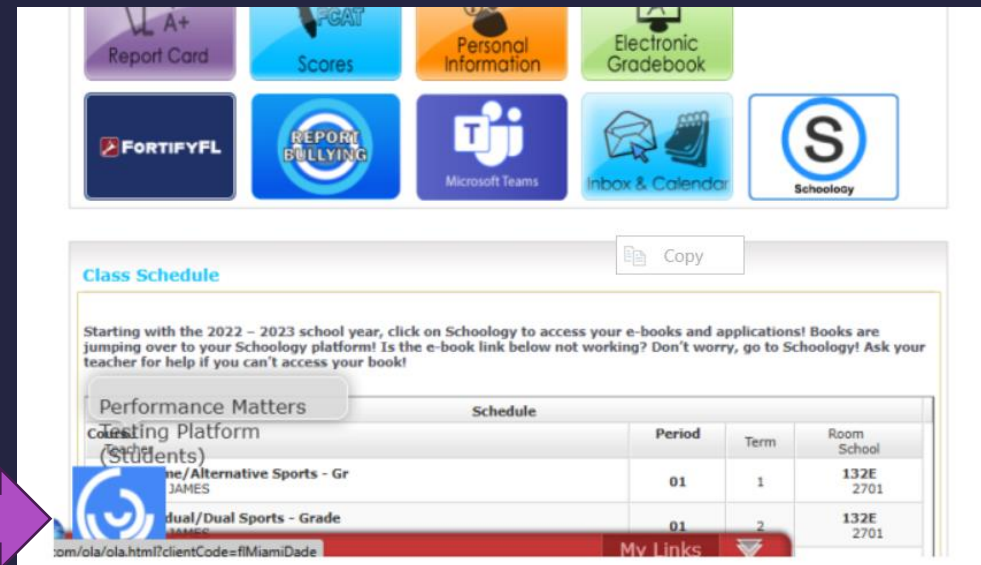
- The science SSA test will be administered on May 19, 2025.
- Scores will be visible through the student portals.



Using Prior Assessment Scores for Studying

- Score reporting for the Mid-year assessment and Unit tests are found on Schoology. You can access your child's scores and see which benchmarks they scored low in for targeted studying.

1. Click on the Performance Matters Icon

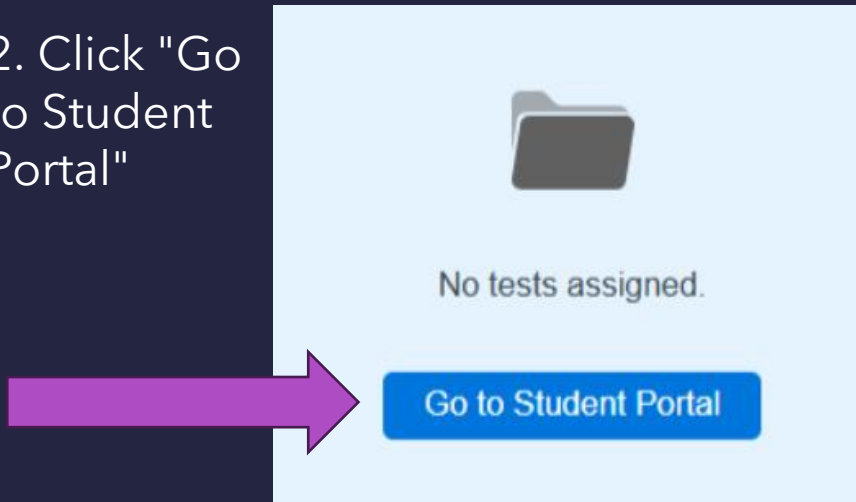


The screenshot shows the Schoology dashboard with various icons at the top: Report Card, Scores, Personal Information, Electronic Gradebook, FORTIFYFL, REPORT BULLYING, Microsoft Teams, Inbox & Calendar, and the Schoology logo. Below these is a 'Class Schedule' section with a 'Copy' button. A text block provides instructions for the 2022-2023 school year. A table titled 'Performance Matters' is visible, with a row for 'Alternative Sports - Gr' and 'Dual/Dual Sports - Grade' both showing a score of 01. A purple arrow points from the text 'Click on the Performance Matters Icon' to the 'Performance Matters' icon in the dashboard.

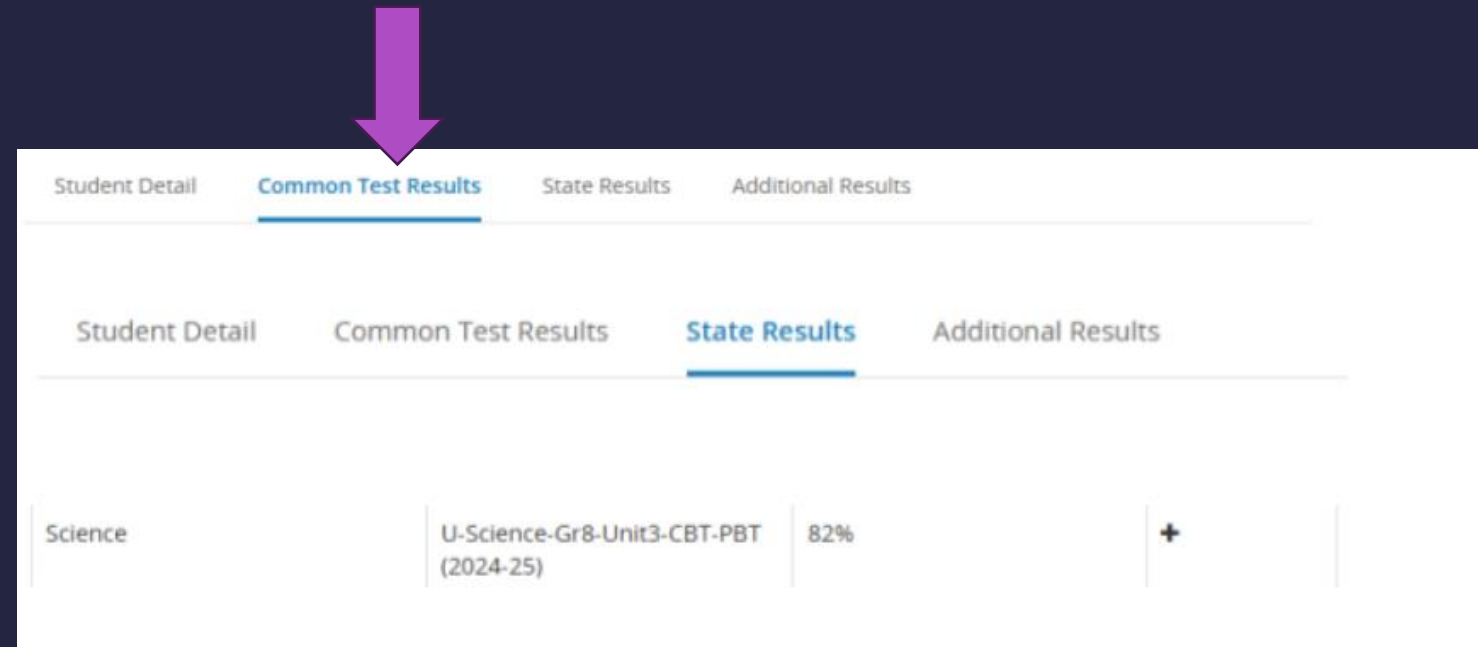
Performance Matters	Schedule	Period	Term	Room
Alternative Sports - Gr		01	1	132E 2701
Dual/Dual Sports - Grade		01	2	132E 2701

Using Prior Assessment Scores for Studying

2. Click "Go to Student Portal"



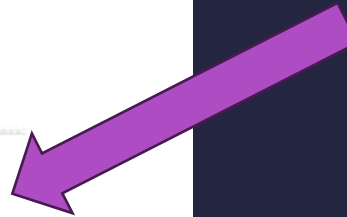
3. Select Common Test results



Using Prior Assessment Scores for Studying

Standard	Standard Description	Question	Score
FL.SC.6.L.14.4	Compare and contrast the structure and function of major organelles of plant and animal cells, including cell wall, cell membrane, nucleus, cytoplasm, chloroplasts, mitochondria, and vacuoles.	2	100%
FL.SC.7.N.1.4	Identify test variables (independent variables) and outcome variables (dependent variables) in an experiment.	2	50%
FL.SC.8.L.18.1	Describe and investigate the process of photosynthesis, such as the roles of light, carbon dioxide, water and chlorophyll; production of food; release of oxygen.	7	86%
FL.SC.8.L.18.2	Describe and investigate how cellular respiration breaks down food to provide energy and releases carbon dioxide.	4	75%
FL.SC.8.L.18.3	Construct a scientific model of the carbon cycle to show how matter and energy are continuously transferred within and between organisms and their physical environment.	2	100%

4. Identify Standards that need to be reviewed/studied



Resources you can use:

- Review the states website [Fldoe.org](http://fldoe.org) for more information
- Khan academy is a resource that can be found in Schoology as app available to students
- Google the standard - There are online flashcards, YouTube clips, and other learning material that align with the standards



Resources continued

- Florida Statewide Grades 3-10 and End of Course (EOC) Computer-Adaptive Test Frequently Asked Questions can be viewed by clicking in the link below: <chrome-extension://efaidnbmnnnibpcajpcgicfindmkaj/https://www.fldoe.org/core/fileparse.php/20102/urlt/CompAdaptTestFAQ.pdf>
- Grade 8 Science Achievement Level Descriptions can be viewed by clicking the link below: <chrome-extension://efaidnbmnnnibpcajpcgicfindmkaj/https://www.fldoe.org/core/fileparse.php/5663/urlt/sciencegrade8-Nov2018.pdf>

Recommendations:

- Get a good night's sleep
- Eat breakfast
- Practice test taking strategies learned in class
- Read questions carefully
- Have good attendance



A dark blue background featuring three 3D geometric shapes on the left side: a sphere at the top, a cube below it, and a large torus (donut shape) at the bottom left. The text "Thank You For Attending!" is centered on the right side in a bold, white, sans-serif font.

Thank You For Attending!